

Table of Contents

Introduction	2
Components of your hearing aid.....	3
How to install / replace the battery	4
Inserting and removing your unit	5
On/Off and volume adjustments.....	7
Removing the instrument from the ear	8
Replacing a tube and tip	9
Cleaning your hearing aid	10
Saving battery power.....	12
Using the telephone	13
Binaural amplification	14
Troubleshooting guide.....	15
Storing and Returns.....	16
Returning for service	Inside Back Cover

Introduction

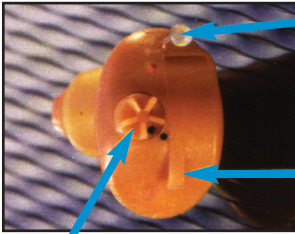
Dear Digi-Ear™ Customer:

Welcome to the world of better hearing. We know that a hearing loss can often alter your daily life and your emotions. We hope to change that by providing you the highest quality hearing instrument to help you hear again. You will find your new hearing aid indispensable. We know it will bring you new freedom, pleasure, and fun to your life.

Expect to spend anywhere from a few days to a few weeks to become adjusted to your new hearing instrument. Try a variety of volumes in various social situations and while at home. The new sounds you hear that you haven't heard in months or years we hope will bring joy back in your life.

Before operating your hearing instrument, please read this manual carefully.

Components of Your Hearing Aid



Removal string

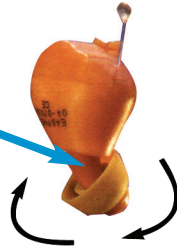
Battery Door

Volume Control

Wax removal Tool



Rotating Nozzle



Fitting the Tip Connection

People's ear canals vary in width and length. To help make sure your hearing instrument fits properly, we provide three sized tips and tubes so you can choose the best one for you.

One tip and tube is already installed on the hearing aid so you can see how it fits. Before removing them, please note how they are installed so that when you replace them, you will know how they fit.

How to Install / Replace the Battery

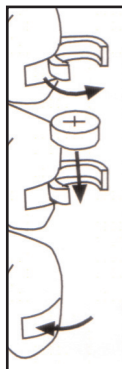
Step 1

Take one battery from the package and remove the paper tab from the top of the battery.



Step 2

Using your fingernail, gently pull up on the end of the battery door until it swings open.



Step 3

Place the battery in the hearing aid with the (+) side up as shown in the accompanying diagram.

Step 4

Gently close the battery door until it snaps into place. If the hearing instrument has been used, be sure to remove all wax from inside and around the battery cover.

Warning: Never use force to open or close the battery door.

Note: Your battery size is 312



Inserting and Removing your Unit

Your hearing instrument is designed to fit either your right or left ear by a uniquely designed rotating nozzle.



You will also see that it appears to be not symmetrically designed. This was done on purpose; it can be placed in the ear with the removal cord either at the top or the bottom. You will probably find it easier if the removal cord is at the top.

Whenever you insert the instrument into your ear, the most important thing is that it fit snugly and it feels comfortable. Whichever way you position it, remember...the rotating nozzle with the fitting tip always curves toward you.



This diagram shows how the hearing aid curves into the ear with the removal string on the top

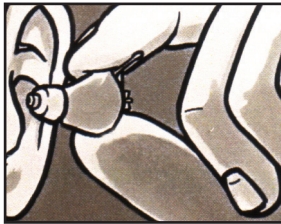
Inserting the Unit into the Ear

If you insert the hearing aid into your right ear, use your right hand; use your left hand for your left ear. Make sure the nozzle follows the natural curve of your fingers when you insert it.

We recommend that you first insert the hearing instrument with the pull string at the top.

Insert the instrument into your ear canal until the main case is seated comfortably in the lower portion of your ear.

If you are having a little difficulty, try pulling down on the ear lobe with the other hand as you insert the hearing aid.



On/Off and Volume Adjustments

Once the unit is in your ear, you can turn the it on by placing your finger-tip onto the round volume wheel and turn you finger gently until you start to hear sound.

Remember. Volume adjustments are opposite for each ear: In the right ear, the volume is increased by rotating with your finger and your hand moving down toward your cheek; turning the volume down is the opposite - the hand rotates up to your hairline. (It is the opposite for your left ear.)

Causes of Whistling

If you turn the instrument on before insert it, you may experience a whistling sound, called "feedback" as you insert it. Once you remove your hand, the whistling should stop.

If, after you have inserted the instrument in your ear, it still whistles, it is usually for any of the following reasons:

- It is not seated properly Try shifting it slightly to change the seating
- Wax has built up in the nozzle opening. (cleaning instructions follow)

Removing the Instrument from the Ear

As you noticed when you inspected the instrument, there is a small string attached to the unit that is used to help you pull the hearing aid from the ear canal.

To remove the hearing aid, grasp the string between your thumb and forefinger and slowly pull the instrument from your ear.

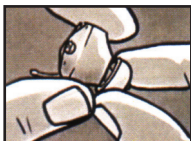
In the unlikely event that the tip and/or nozzle should come off and remain in your, go to your doctor to have it removed. NEVER insert anything in your ear to attempt to remove the tip and/or nozzle yourself.

Replacing a Tube and Tip

There are three different sized tips and tubes included with each hearing aid; one tip and tube are already installed on the unit. Depending on the size of your hearing canal, one of the supplied tips and tubes will fit.

Before you attempt to replace a tip note how the current tube and tip are installed so that when you replace the items, they are installed properly.

1. Remove the nozzle as shown below:



2. Snap the same or new nozzle back onto the instrument and check to make sure the rubber tip is in the correct position.
3. Re-insert the hearing instrument into your ear.

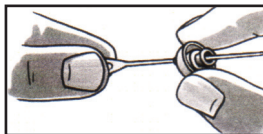
Cleaning Your Hearing Aid

Your hearing instrument will naturally accumulate ear wax with use. It is important that you check the nozzle regularly for any wax build-up. We recommend that you do this at least once a week, depending on how fast wax builds up in your ears. If you see wax accumulating on the end of the nozzle, it's time to clean.

We provide a plastic cleaning tool to help you clean the nozzle. Under no circumstances should you insert this tool into your ear or use it to remove wax from your ear...serious injury may occur!

To clean your hearing aid, remove it from your ear and remove the nozzle as shown on the previous page.

1. Grasp the nozzle in one hand and the wax tool in the other. Insert the end of the wax tool into the hole in the nozzle while twisting it, as shown below to clear the hole of wax.



Cleaning Your Hearing Aid

2. Once cleaned, snap the nozzle back onto the instrument and check to make sure the rubber tip is in the correct position as it may have moved during the cleaning process.

3. If you have purchased a Maintenance Kit from our web site. (It is listed in the Accessories section under Products), take one of the wipes singly, or in combination with the special wax cleaning solution, and thoroughly clean the exterior of the unit. You can also open the battery door and clean carefully around the edges.)

Warranty Warning: If you do not clean your hearing instrument periodically and wax builds up so much into the tube that it penetrates the receiver opening on the case causing the unit to malfunction, your warranty is void. However, we will repair it for you at your cost if you send it back to us. See the end of this booklet for return procedures.

Saving Battery Power

To turn the hearing aid off, you can do one of two things: line up the two black dots on the volume control (This is the "Off" position), or you can open the battery door if you can't see the dots.

You should remove your hearing instrument and turn it off before you go to bed.

Each hearing aid battery we provide should last between 190 and 200 hours. If you have your hearing aid "On" an average of 10 hours a day, this means each battery should last almost three weeks. If you have the hearing instrument on longer each day, you will have to replace the battery more often.

You can visit our web site at www.hearingcentral.com to purchase additional batteries. They are listed under the "Products" tab.

How to Tell Your Battery is Low

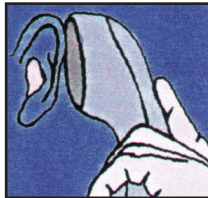
Your battery will need replacing when: your volume no longer works, your volume begins to fade during use, or you hear distortions or buzzing. Note: if the batteries are new and these incidents occur, clean your unit, insert it again, and try it before replacing batteries.

Using the Telephone

There is an effective and basic method for using most hearing instruments with most telephones.

First is to reduce the volume when you use the phone, especially if you hear the feedback whistle, or if voices appear distorted.

Second. Move the receiver away from the ear. A common technique is to rest the top of the phone against the top of the ear and the head, leaving a space between the phone speaker and the ear, as shown below.



Alternatively, if you are using the Digi-Ear™ instrument in one ear, use your other ear to carry on a phone conversation.

Binaural Amplification

Nature gave us two ears for a reason - we can hear better with two ears listening. The majority of people who have hearing loss are affected in both ears, albeit unequally. By utilizing two hearing aids (binaural), the full power of hearing can be achieved.

Two hearing instruments usually provide the following benefits:

1. Better overall sound quality compared to one hearing aid (think 'stereo'.)
2. With two hearing aids, the ability to locate the source of a sound is enhanced.
3. Increased discrimination of sounds in normal and noisy environments.
4. A sensation of more natural, balanced hearing.

If you purchase a second instrument of the same make and model within 30 days of purchasing your first one, you will receive an automatic 10% discount. You can purchase an additional hearing aid at **www.hearingcentral.com**

Troubleshooting Guide

Problem	Possible Cause	Solution
No Sound	Unit not on	Check volume control
	Wax build-up	Remove unit and check nozzle end and clean
	Dead battery	Replace battery
	Improper battery installation	Make sure battery is installed "+" sign up
Whisting	Not seated properly in ear	Reinsert and re-seat
	Volume is too high	Turn down the volume
	Wax build-up	Remove unit and check nozzle end and clean. If this happens continuously, see your doctor.
Distortion or Buzzing	Probably a low battery	Replace battery

Storing Your Hearing Instrument

To store your hearing aid(s) for extended periods of time, follow these steps:

1. Remove the battery
2. Clean the instrument
3. Place the instrument in the original box*
4. Store in a clean, dry place at room temperature

* If you purchased the Maintenance Kit (it's listed in the Accessories section under Products) at www.hearingcentral.com, it also comes with a special Stay-Dry Dehumidifier Jar.